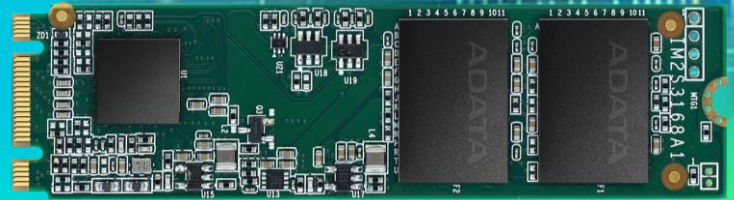


M.2 2280 SSD

IM2S3168



The ADATA IM2S3168 M.2 2280 SSD is equipped with 64-layer 3D TLC (BiCS3) NAND flash for excellent read/write performance and high capacities. Its 3K P/E cycle rating ensures long-lasting durability. What's more, with LDPC ECC error correction and RAID Engine, the IM2S3168 ensures data accuracy and integrity. The SSD comes in a range of capacities for different requirements. Customers can also benefit from ADATA's proprietary A+ SSSDTool software for easy management and real-time monitoring of ADATA SSDs. The IM2S3168 is ideal for automation, embedded system, networking, surveillance and transportation applications.

Features

- 64-layer 3D TLC (BiCS3) NAND flash for higher capacities, efficiency, and durability
- 3K P/E cycle rating for excellent durability and reliability
- Wide temperature support: -40°C to 85°C
- LDPC ECC (error correction) technology
- Supports RAID Engine and SLC Cache
- Thermal Throttling automatically adjusts temperatures for prolonged product lifespan
- Suitable for automation, embedded system, networking, surveillance and transportation applications

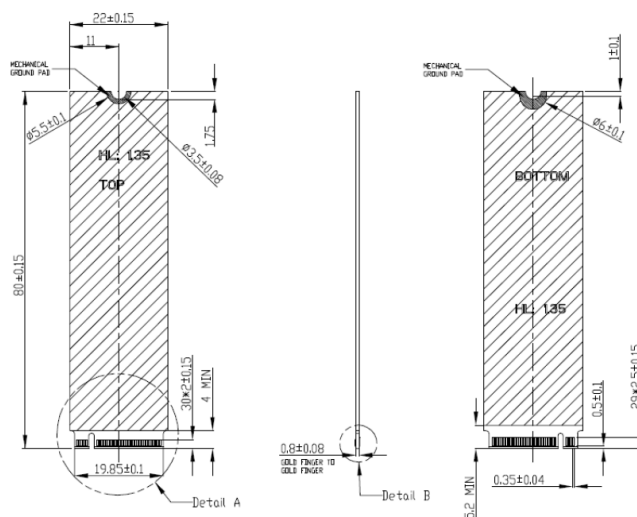
Ordering Information

Operating Temp.	64GB	128GB	256GB	512GB	1TB
0°C to 70°C	IM2S3168-064GD	IM2S3168-128GD	IM2S3168-256GD	IM2S3168-512GD	IM2S3168-001TD
-40°C to 85°C	IM2S3168-064GP	IM2S3168-128GP	IM2S3168-256GP	IM2S3168-512GP	IM2S3168-001TP

Specifications

Model	IM2S3168
Form Factor	M.2 2280
Capacity	64GB – 1TB
Interface	SATA III
Flash Type	64L 3D TLC
Dimensions (L x W x H)	80 x 22 x 3.6mm
Sequential Read (Max.)	560MB/s
Sequential Write (Max.)	520MB/s
Operating Temperature (Standard)	0°C to 70°C
Operating Temperature (Industrial)	-40°C to 85°C
Operating Voltage	3.3V
Power Consumption (Max)	1.58W
Shock Resistance	1500G/0.5ms, Half Sine Wave
Operating Humidity	5%-95% RH, non-condensing
Vibration Resistance	20G (20-2000Hz)
Technologies	LDPC ECC, RAID Engine, Wear Leveling, SLC Cache, TRIM and NCQ command, Thermal Throttling, S.M.A.R.T. Monitor, AES 256-bit Data Encryption

Diagram



Unit: mm

Contact Us

HQ (Taiwan):

T: +886-8228-0886

E: IA_Global@adata.com

US:

T: +1-714-332-8708

E: IASales_us@adata.com

EU:

T: +49-899-0405-296

E: IASales_eu@adata.com

China

T: +86-21-6233-1010

E: IASales_cn@adata.com

JP:

T: +81-3-5807-0011

E: IASales_jp@adata.com

APAC/MEA:

E: IASales_apacmea@adata.com